

*To arrange a viewing contact us  
today on 01268 777400*



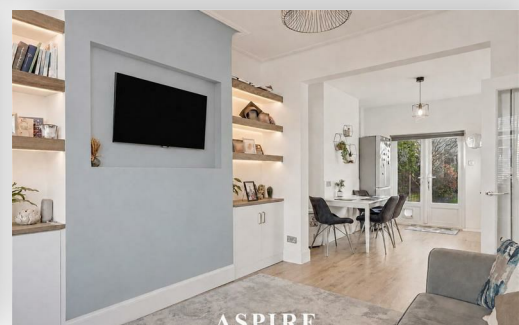
**ASPIRE**



ASPIRE



ASPIRE



ASPIRE

## **Ramuz Drive, Westcliff-On-Sea Guide price £350,000**

Aspire Estate Agents are delighted to introduce this exceptional three bedroom end terrace home, beautifully finished throughout and offering a stunning blend of modern design, high-spec features and everyday practicality. GUIDE PRICE £350,000-375,000

[www.aspireestateagents.co.uk](http://www.aspireestateagents.co.uk)

From the moment you arrive, the property immediately impresses with its stylish frontage, app-controlled exterior lighting and convenient side access leading through to the rear garden. Inside, the home has been thoughtfully upgraded to create a bright, contemporary and move-in ready space ideal for first-time buyers, families and professionals alike.

The ground floor offers a fantastic open-plan layout, perfectly designed for modern living. The elegant bay-fronted lounge provides a cosy yet stylish space to relax, complete with built-in storage and touch-control ambient backlighting for a warm evening feel. Flowing seamlessly through to the kitchen/diner, this impressive social space is ideal for entertaining, family dining and day-to-day living.

The kitchen is a real standout feature, fitted with sleek wrap-around light grey cabinetry, integrated appliances, soft-close units, touch-control lighting, dimmable under-cabinet lighting and a modern mixer tap with pull-out multifunction spout. Designed with both style and function in mind, it is a superb space for anyone who enjoys cooking, hosting or simply having a beautifully finished kitchen at the heart of the home.

Upstairs, the property continues to impress with three well-presented bedrooms. Bedroom one is a bright and elegant principal room, featuring a beautiful bay window and large built-in mirrored sliding wardrobes. Bedroom two is another excellent size, offering built-in storage and space for a desk or dressing area, while bedroom three provides a versatile room ideal as a child's bedroom, nursery or home office.

The bathroom has been finished to a stylish standard and includes a fantastic Japanese-style toilet with built-in bidet function, heated seat, soft-close lid and integrated dryer, alongside a dual-fuel towel rail for added comfort and practicality.

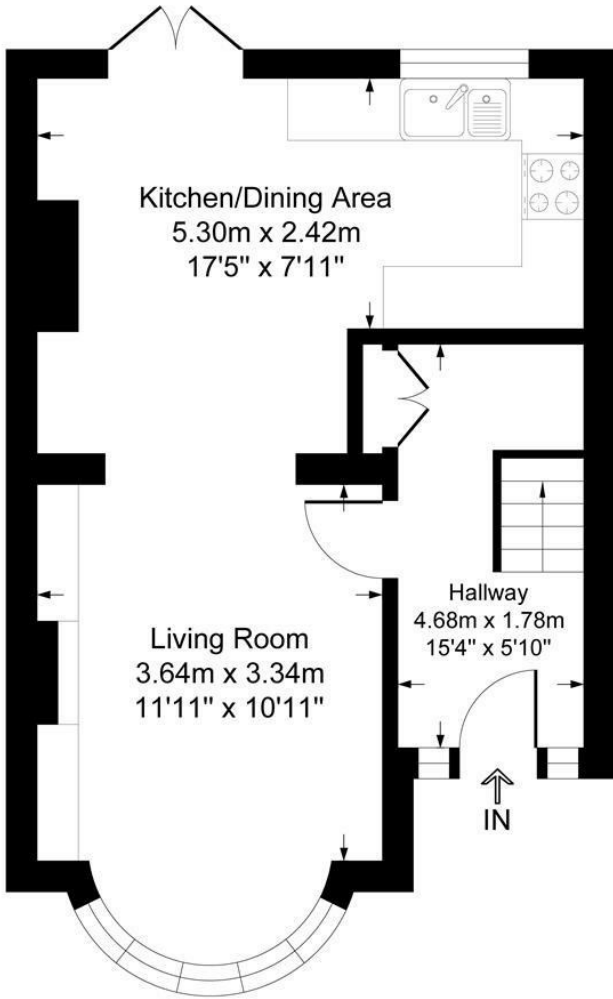
Externally, the west-facing rear garden is a wonderful private space, ideal for relaxing, entertaining or enjoying the warmer months. The garden features lawn, decorative shingle borders, mature planting and a large shed, while the side access adds excellent convenience.

The location is superb, positioned within easy reach of Prittlewell Station, Southend University Hospital, local shops, supermarkets, parks, well-regarded schools and Southend seafront. Priory Park and Chalkwell Park are also within easy reach, offering fantastic outdoor spaces for families, dog walkers and weekend strolls.

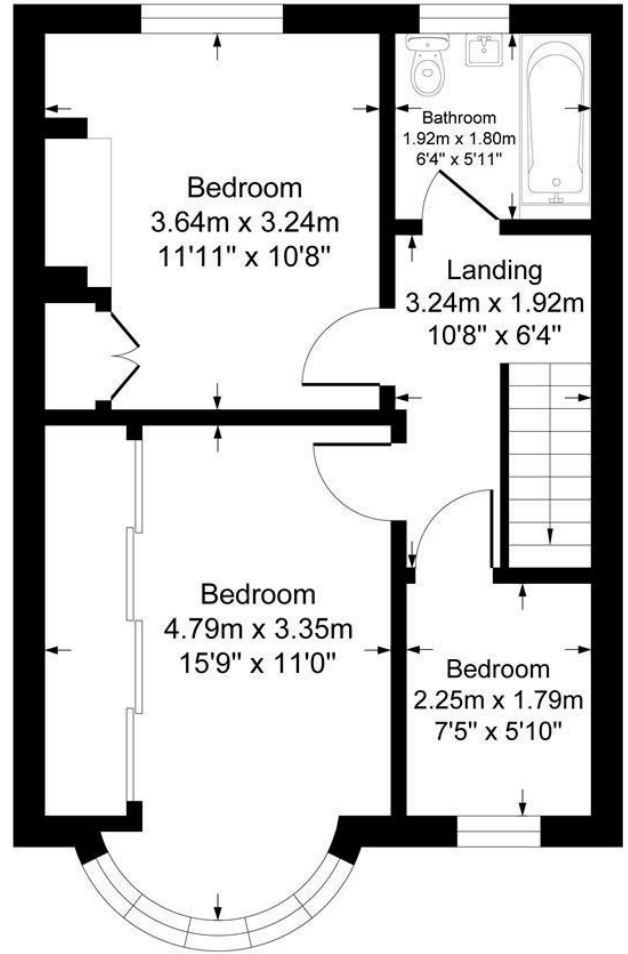
This is a beautifully upgraded, high-spec home in a highly convenient location — stylish, practical and ready to move straight into.

# Ramuz Drive

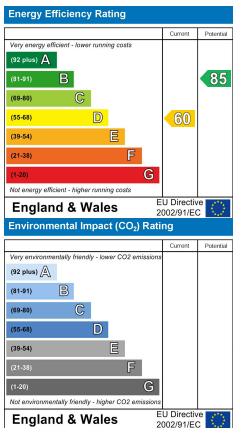
Approximate Gross Internal Floor Area = 81.5 sq m / 878 sq ft



First Floor



Second Floor



Under the Property Misdescriptions Act 1991 we make every effort to ensure our sales details are accurate but they are a general outline and do not constitute any part of an offer or contract. Any services, equipment and fittings have not been tested and no warranty can be given as to their condition. We strongly recommend that all the information provided be verified by your advisors and in particular, measurements required for a specific purpose such as fitted furniture or carpets. Please tell us if you have any problems and members of our branches will help either over the phone or in person. A copy of our complaints procedure is available on request. The details are issued on the strict understanding that any negotiations in respect of the property named herein are conducted through Aspire Estate Agents.